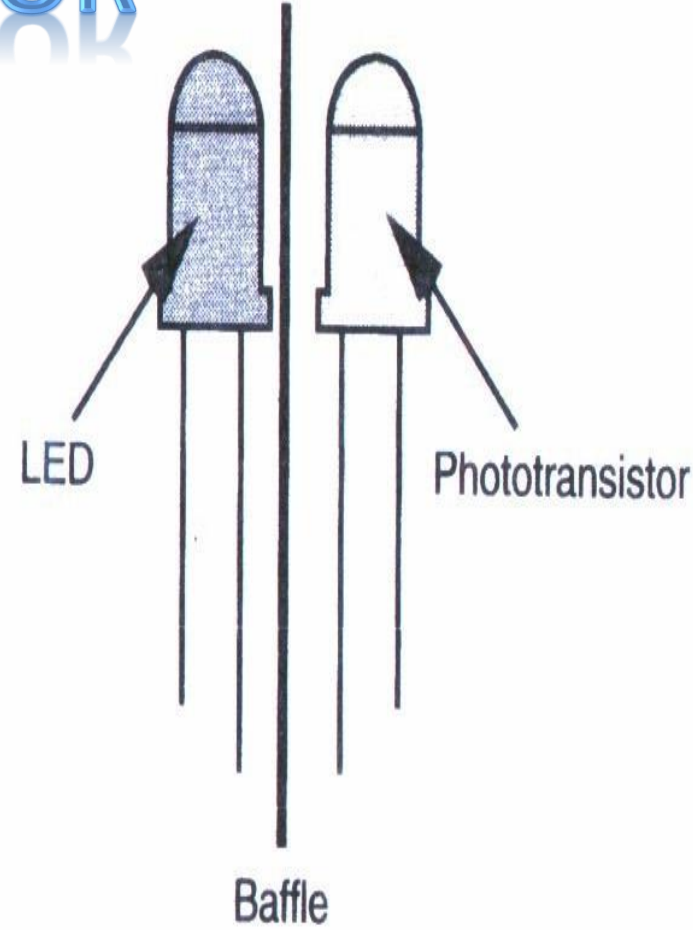
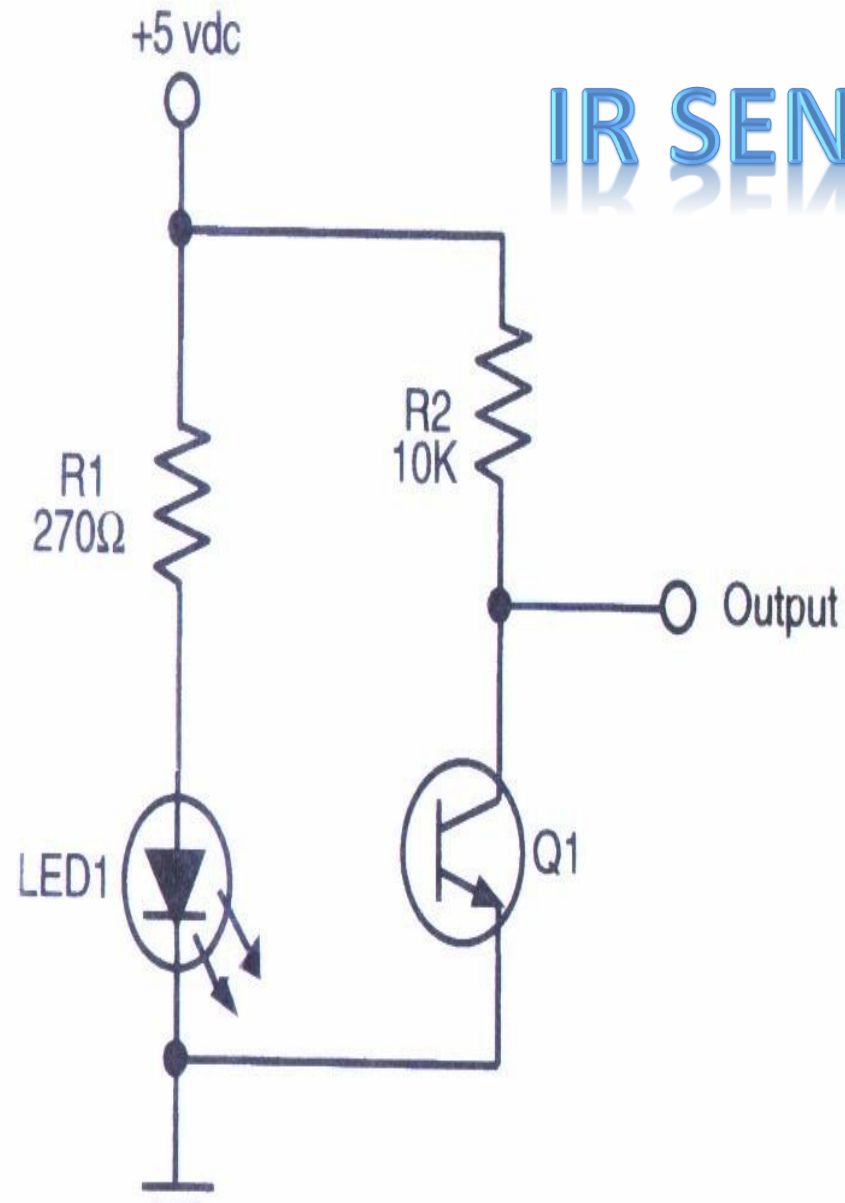
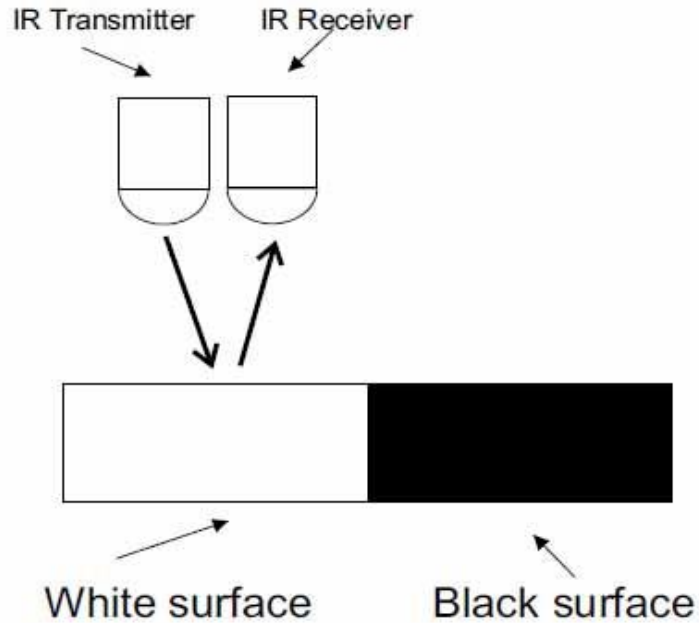


# IR SENSOR

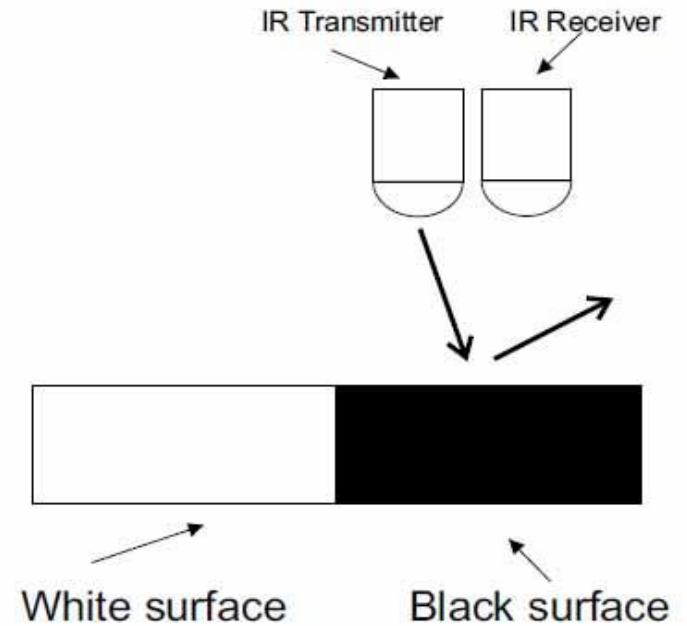


# INTRODUCTION

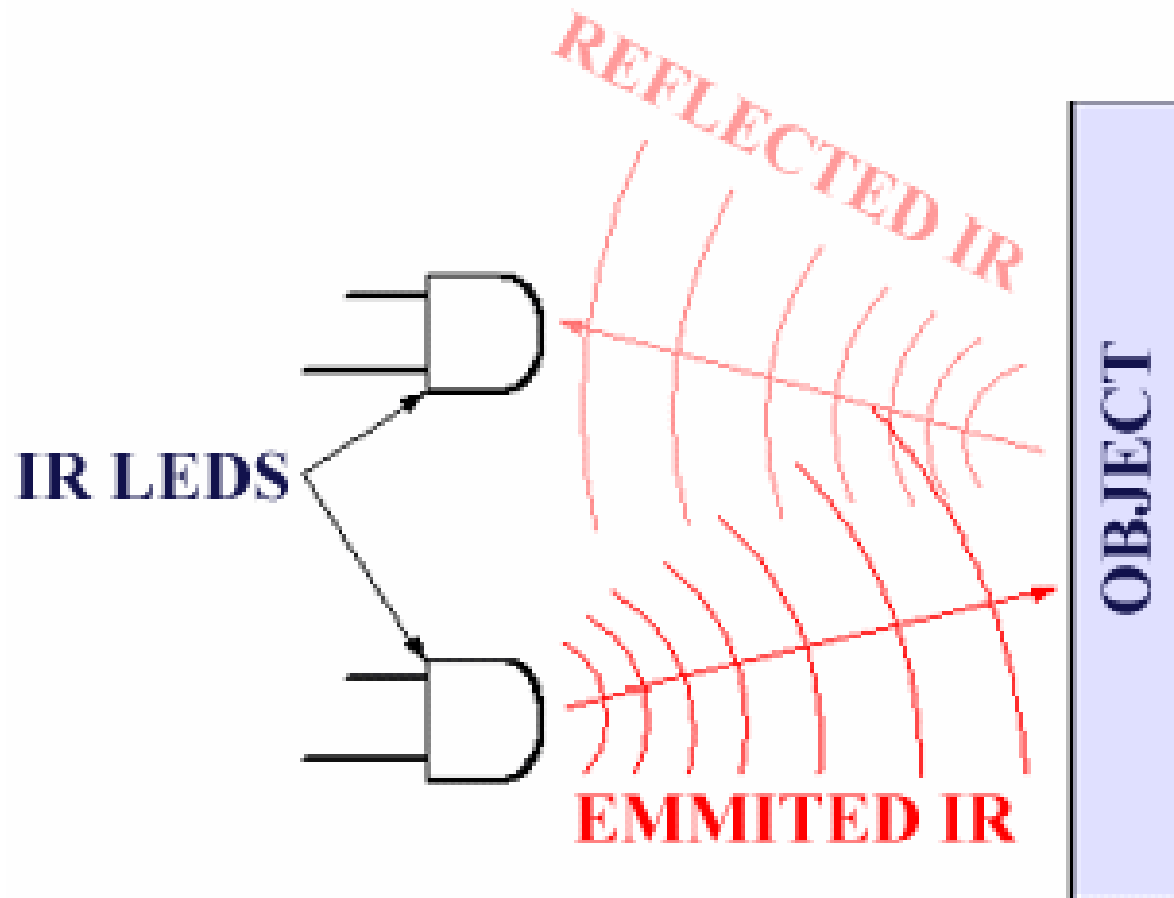
Light Reflected by White Surface



Light Reflected by Black Surface



# INTRODUCTION



# WORKING

- IR-LED – Tx
- PD – Rx

[Click here to visit -ROBO INDIA](#)

# WORKING IR LED

- IR-LED work similar to normal LED
- IR-LED transmit infrared light
- IR light is not visible to our necked eye
- IR light is detected by Photodiode

# WORKING PHOTODIODE

- How PD work ?
- PD generate the voltage depending on the intensity of light

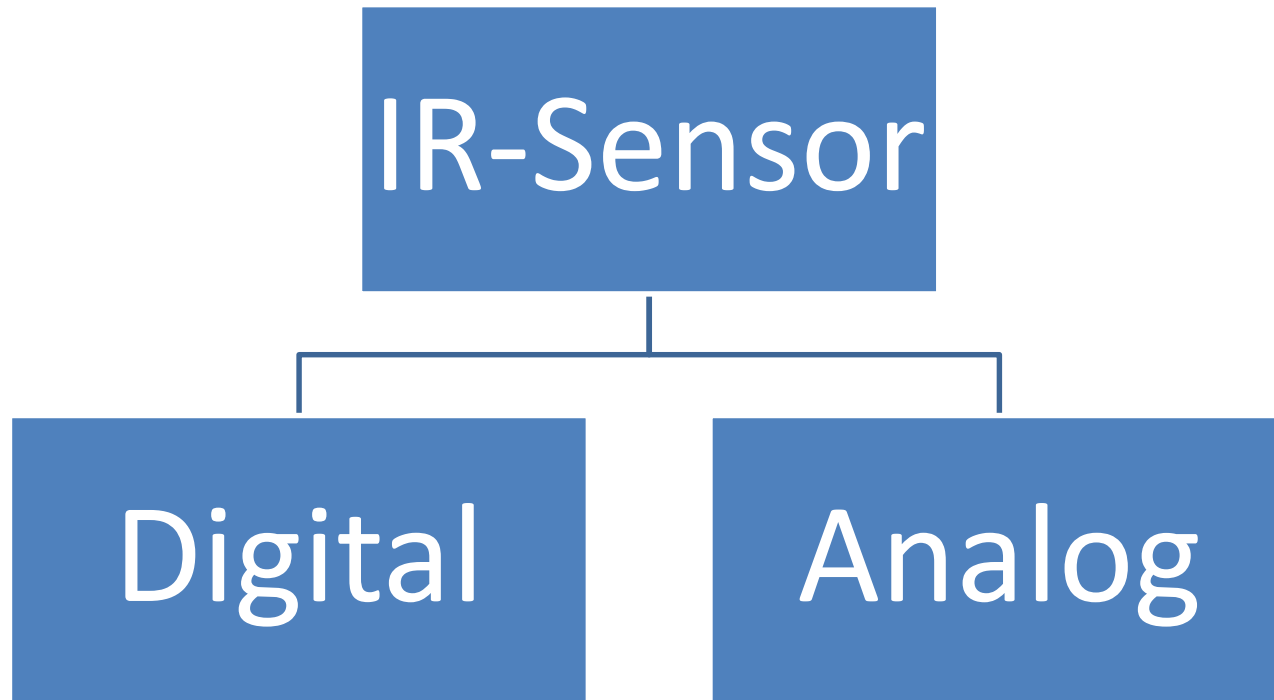
[Click here to visit -ROBO INDIA](#)

# WORKING PHOTODIODE

- vdo

[Click here to visit -ROBO INDIA](#)

# TYPE OF IR-SENSOR





# TYPE OF IR-SENSOR

- **Digital** – In digital sensor output is digital (**High** or **Low**).
- **Analog** – In analog sensor detection depend on intensity of light received.